

Applied Research Associates



Release Notes

Pavement ME Deflection Data Analysis and
Backcalculation Tool (Build 1.1.5)

September 24th 2021



Contents

1	INTRODUCTION	3
2	ISSUES RESOLVED	3
2.1	VOID DETECTION CALCULATION AND PLOT FIXES.....	3
3	FEATURE REQUESTS.....	4
4	UPGRADING	4
5	CONTACT INFORMATION	5



1 Introduction

This document describes the resolved and closed issues as well as the features present in the v1.1.5 release of AASHTOWare Pavement ME Design Backcalculation Tools (BcT) released on September 24th, 2021.

2 Issues Resolved

BcT v1.1.5 resolved issues or bugs described in the following subsections.

2.1 Void Detection Calculation and Plot Fixes

ID	Title	Repro Steps	State
17022	Void detection calculation is showing incorrect results	<ol style="list-style-type: none">1. Open BcT2. Select any fwd file3. Run through the screens4. Backcalculate the moduli5. Proceed to Physical Features and view the Void intercept Chart<ol style="list-style-type: none">a. The BcT incorrectly calculates the void intercept. Instead of performing a linear regression for each station independently, it is accumulating the data for load and deflection.b. The previous station's drop load and deflections are not cleared for each station. <p>Figure 1 shows the void intercept plot from the BcT versions 1.1.4 and prior.</p> <p>Fix:</p> <ol style="list-style-type: none">1. The issue was resolved by calculating the void intercept for each station independently. <p>Figure 2 shows the corrected void intercept plot for BcT version 1.1.5.</p>	Resolved

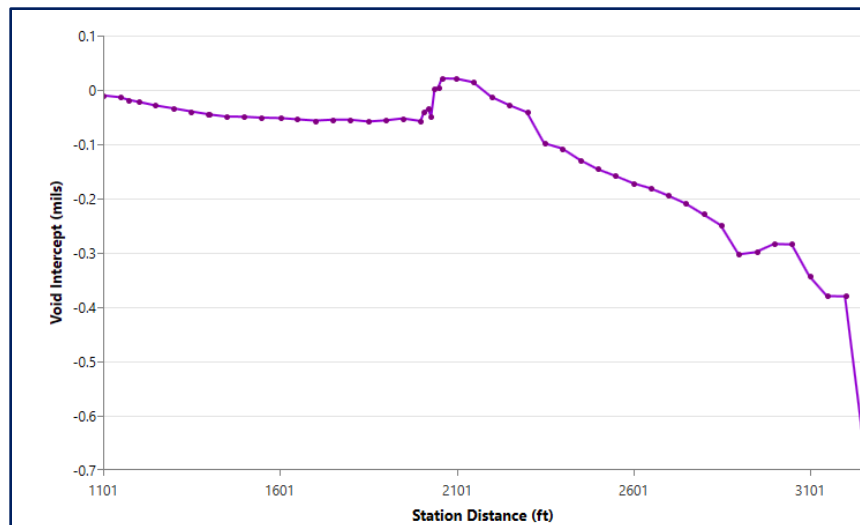


Figure 1. BcT Void Intercept Graph for Version 1.1.4 and prior (incorrect)

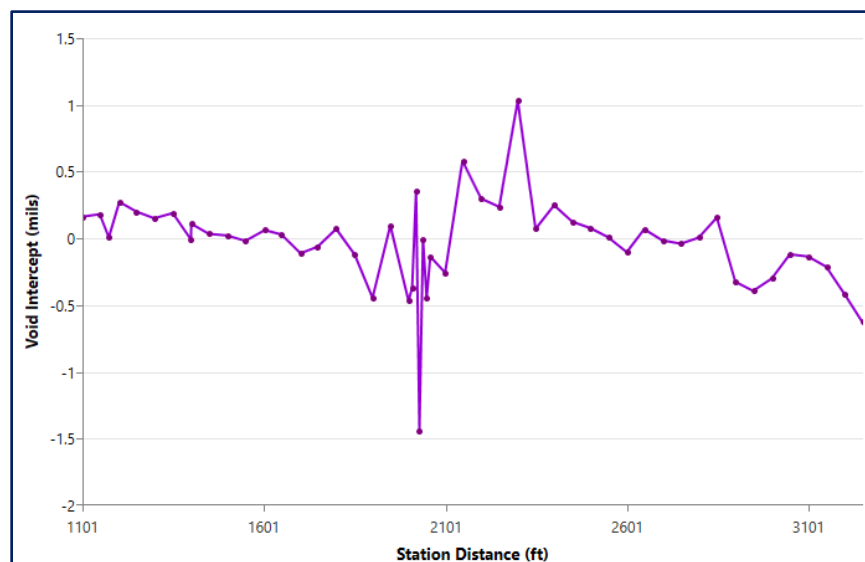


Figure 2. Corrected BcT Void Intercept Graph for Version 1.1.5

3 Feature Requests

Feature requests can be made to Pavementmedesign@ara.com or to task force members. Requests can also be filed through the Pavement ME Design web portal at www.me-design.com.

4 Upgrading

To upgrade to the newest version of the software, users will need to uninstall the current version and then reinstall the new version of the software on their machines. They will be required to input their updated or new license code (and license URL for site license users) after the program is installed and opened. The new version of the software can be downloaded at <http://www.me-design.com>.



5 Contact information

If you have any questions regarding these release notes, or regarding the ME Design software, please contact the ME Design Support Team at:

The ME Design Support Team

Email: pavementmedesign@ara.com

Phone: 1-877-500-3496 or 217-356-4500

Monday through Friday

8:00am – 5:00pm CST